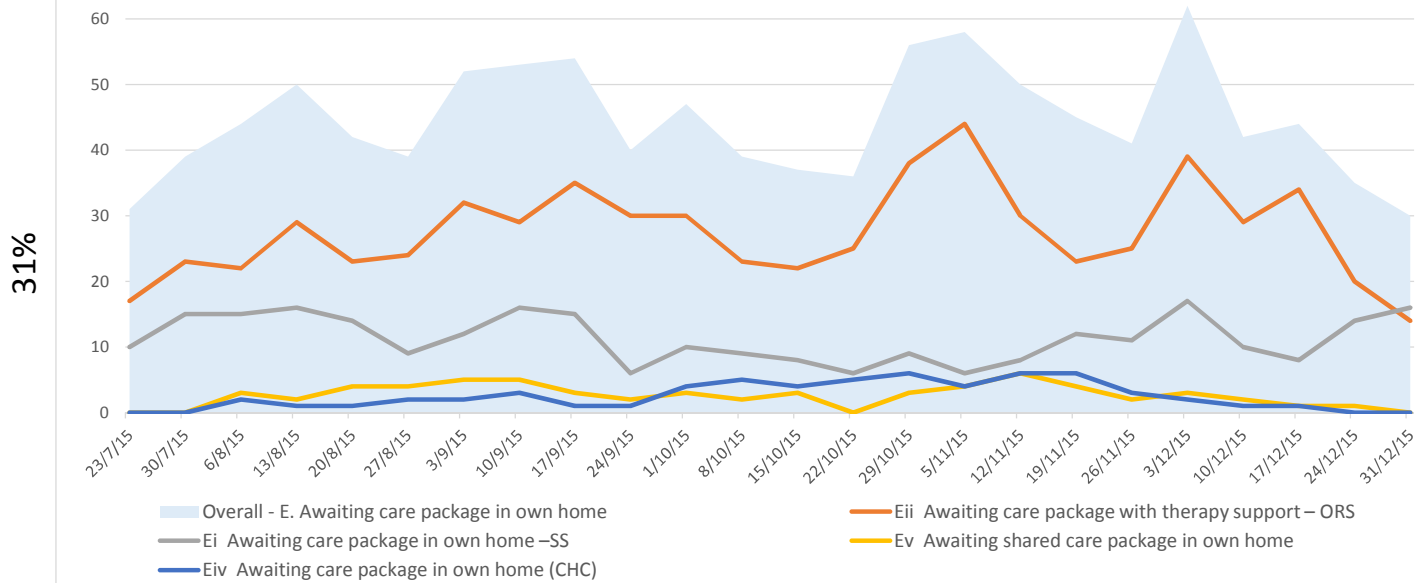
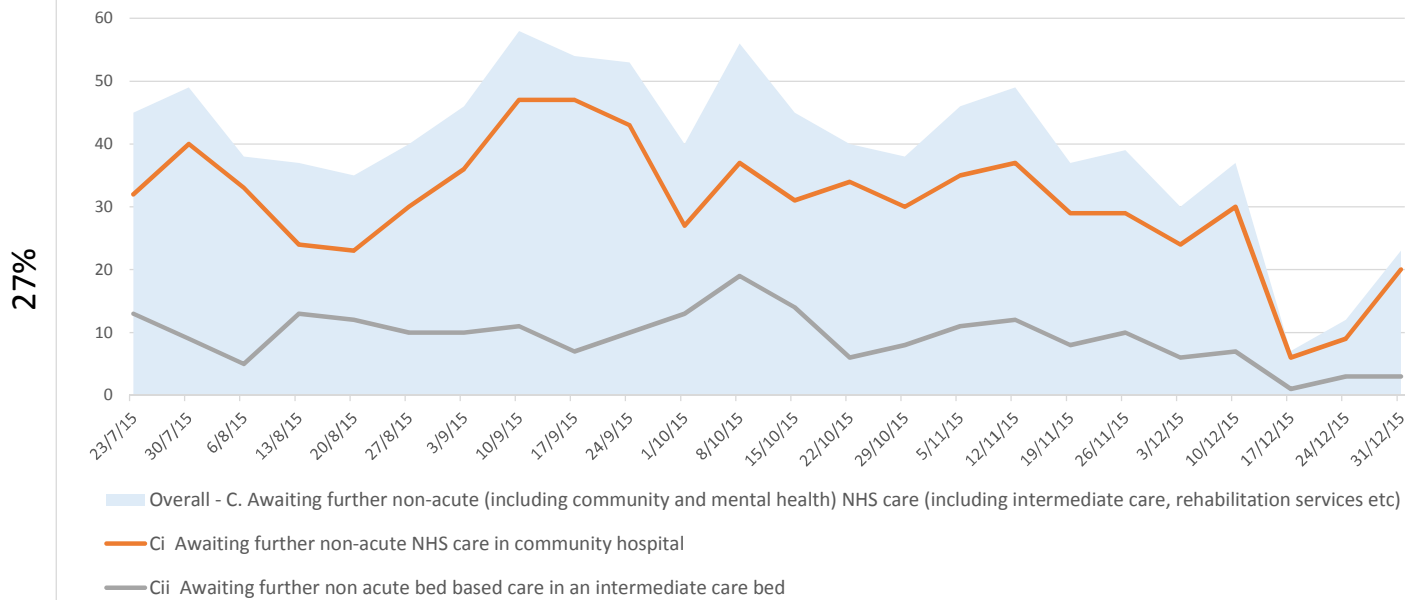


# Main National Delay Reasons as explained by main local reasons

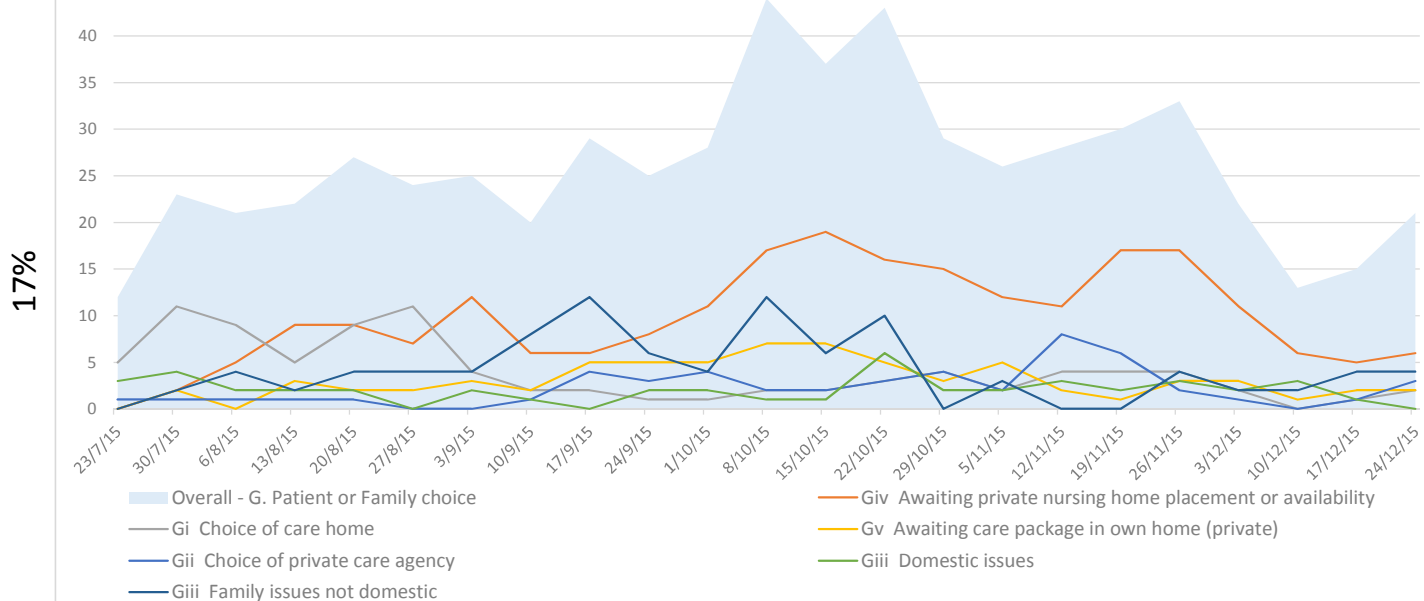
Awaiting care package in home home - what are the system wide drivers?



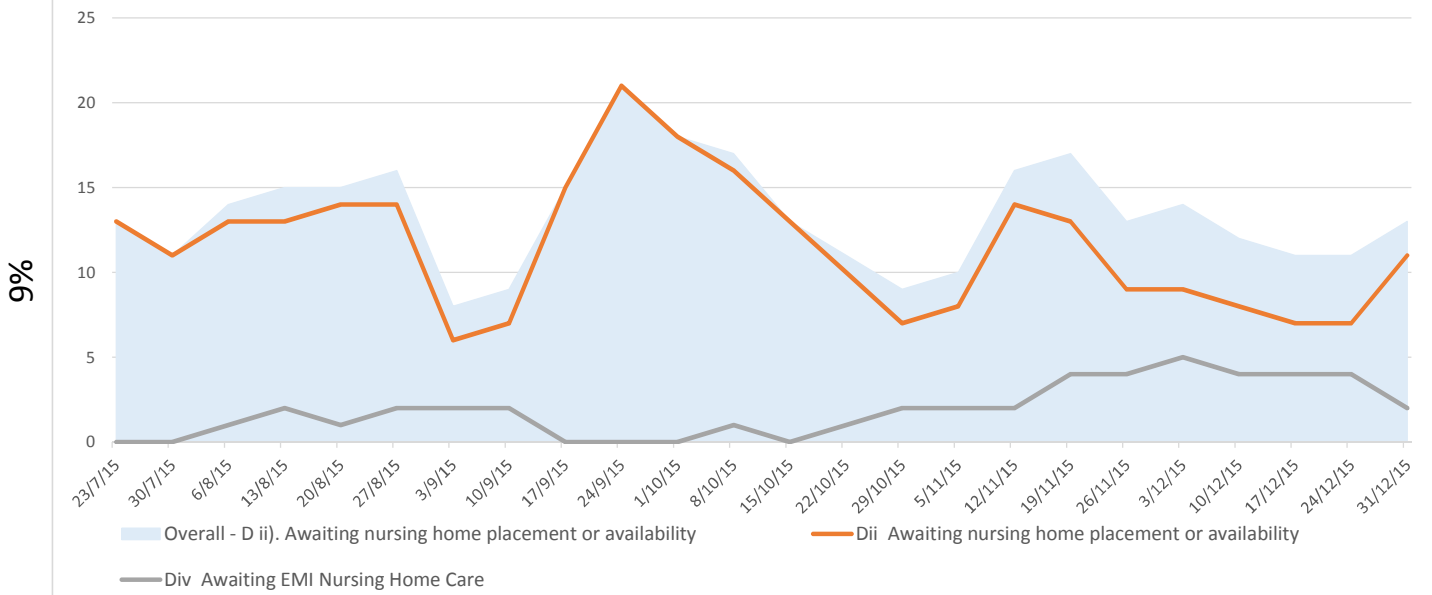
Awaiting a non acute bed - what are the key drivers?



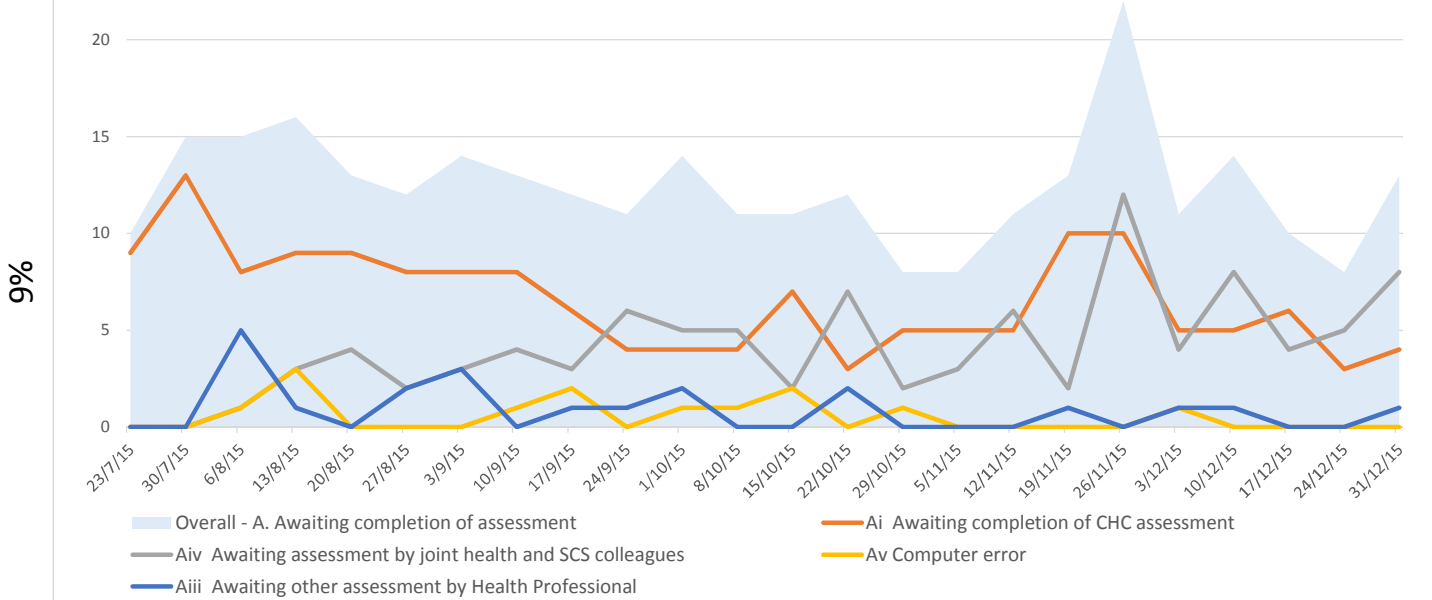
Patient or Family choice - What are the system wide drivers?



Awaiting nursing home placements - what are the system wide drivers?



Awaiting Completion of Assessment - what are the system wide drivers?



93%